

Material / Application

Corrugated Bitumen Sheet designed for Roofing application on auxiliary buildings.

CE EN 534:2010 - Corrugated bitumen sheets - Category S

DOP: 07-002 2016-05-23

Technical characteristics

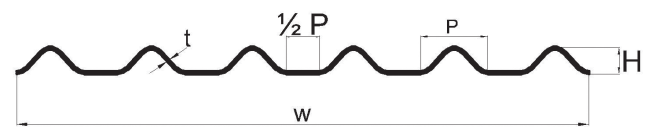
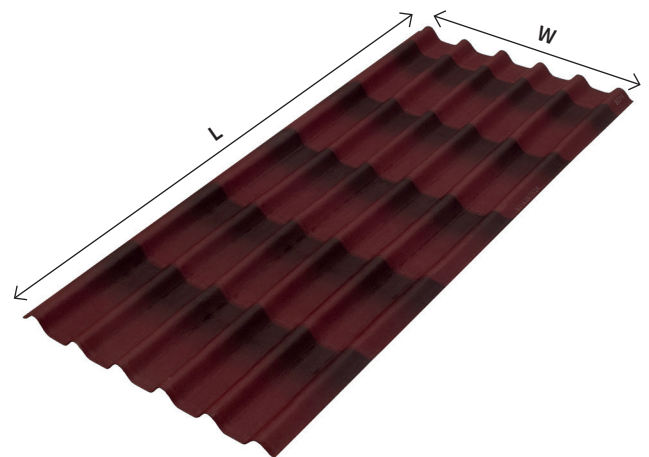
Length	L	195 cm
Width	w	82 cm
Thickness	t	2.6 mm
Heigh of corrugation	H	38 mm
Pitch of corrugation	P	96 mm
Gross surface		1.60 m ²
Net coverage surface		1.32 m ²
Weight of product		4.5 kg
Weight / m ²		2.80 kg/m ²
Corrugations + Flat parts		6 + 5

MECHANICAL & PHYSICAL PROPERTIES

Bending under downward load	> 700 N/m ²
Impact strength	250 mm
Tearing strength	> 150 N
Water impermeability	Pass ¹
Proportion of bitumen	> 40%
Homogeneity	Pass ²
Water absorption	< 20%
Water vapor permeability - EN ISO 12572	Not applicable

¹No drop of water underneath sheet after 48 hours

²No area larger than 1 cm² without bitumen



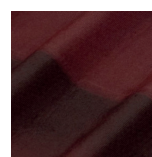
DURABILITY

Water impermeability after ageing	Pass ¹
Tearing strength after ageing	> 150 N
Thermal coefficient	< 100.10-6 1/K

FIRE PERFORMANCE

Reaction to fire - EN 13501-1	E
External fire performance - EN 13501-5	Froof

Color



Dual Red



Dual Green

Installation

Special conditions of installation are required.
Refer to the installation guide.

Overlapping recommendations

- Horizontal Overlap: 12 cm
- Vertical Overlap: 9.5 cm (1 corrugation)

Distance between purlins: 37 cm

Minimum pitch: 9 % (5°)

onduline.com

Onduline
24, Quai Gallieni
92150 Suresnes, FRANCE